

ScholarSYS

Enterprise Solution For All Your Academic And Administrative Needs

www.scholarsys.com www.stcerp.com www.stc.ind.in



Entrance Test & Admissions

Admission form distribution, submission, tracking the required documents, Entrance Test, Entrance Result updation, Multiple levels of approvals Like, Principal Approved, Board Approved then Chairman Approved, etc. Reports of session wise admissions, rejections, admission forms sold, etc.



Student Information & Administration

Personal & General Informations, Health records, House and Activity Management. Achievements, grouping & grading, student accounts, concessions. Siblings Records, Collection of scanned images and other documents.



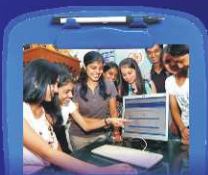
Fee Collection and Outstanding

User defined fee heads, receipt modes, student and non student receipts. Monthly, bi monthly, quarterly, half yearly, annually or installment based dues and receipts. Provisions for fee refund. Cheque bounce entries along with bounce charges. Automatic late fee calculation. Provision for optional and permanent concessions.



Examination Scheduling and Managing

Examination Hall Ticket Generation. Any number of exams(Annual, Terminal, class tests, unit tests, etc) can be created. Simplified mark entry forms help teachers to enter the marks in few minutes. Automatic grading on user defined formulas. Automatic descriptions, descriptive indicators, class teacher comments, etc.



Result Publishing & Analysis

Results can be made available online for the evaluation by parents and management. CCE Result Pattern for CBSE schools, State Board Results, ICSE, or any pattern as per customer requirement. Best for same institution running schools affiliated to different boards. Each of the school will be able to generate report for their respective board requirements.



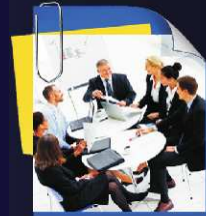
Transportation & Route Tracking

Pick-up drop facility can be availed for any duration in the session. User can create Vehicles and Routes as per their needs. Vehicle wise maintenance and per kilo meter costing. Renewal reminders. Vehicle wise alert to parents, students.



Attendance Management

Daily Class section wise attendance can be recorded either manually or through the access controlling (biometric) devices if available. Staff attendance also can be recorded. Muster Register gets automatically maintained. Salary can be automatically calculated on the basis of biometric data.



Staff Administration & Substitution Management

Information about teaching and non-teaching staff. Examination wise lesson Planning. Assigning Jobs and tracking their progress. Identifying the absent teachers from attendance system generates substitution automatically considering the substitution load on teachers.



Payroll & Statutory Records Management

Information about teaching and non-teaching staff. User defined salary structure and tax structure. Calculation of taxes, PF, ESIC, etc. and salary generation. PF/ESIC Challans can be directly uploaded to their portal from software. Registers like ESIC, PF, Bonus, Taxes, etc. Salary Slips, Bank Transfer Letters, etc. also available.



Financial Accounting

'ScholarSYS' has a Complete Financial Accounting software built in it. Having entire accounting features in it, ScholarSYS' generates all types of account books, Trial Balance, Income & Expenditure Statement, Balance sheet, etc. User can print vouchers. Track cheques issued or received. Can print cheques, alert sundry debtors.



Stores & Inventory Management

'ScholarSYS' controls the inventory and also it handles Purchase Orders, Material Receipts, Rejections, Scraps, etc. It can provide you department wise stock even for previous date also. Rate and availability of items supplied By vendors also can be compared or retrieved. It can automatically request quotations for required items from related vendors, generate purchase orders automatically to multiple vendors comparing prices, make, delivery schedules, etc.



Point of sale

'ScholarSYS' has a Point of Sale module, which manages the operation of cafeteria, laundry, stationary stores etc. Software provides credit facility also to selected students and staff. Reports generated from this module includes, sales report over a period of time, credits and credit settlements Over a period of time, etc.



Timetable Generation

'ScholarSYS' will simultaneously generate the timetable for teachers and class/Sections considering all possibilities and preferences. It allows users to set the likes (particular subject, teacher for 1st period) and dislikes (music not in the 1st half). Once generated, user can also fine-tune it by editing.



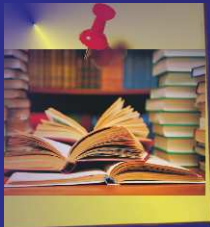
Library Management

Library Module of 'ScholarSYS' is quiet easy and fast in issuing and receiving books. Students can be identified by ID Card and Books can be identified by Barcode Label on books automatically. Reports available includes issues and returns over a period of time. Wide and advanced searching facilities and Cover-page scanning are also key features of the software. Readers can be alerted when the book is available in library or book held is delayed.



Hostel Management

'ScholarSYS' manages hostel activities like Check-in, Check-out, Occupancy status and Maintenance. Pocket money accounting, restriction for only specified photo given visitors, record of visits. Costing of Hostel can also be analyzed.



Syllabus, Book List & Publisher Details

Class wise books & publishers, chapters per examination with time schedules. Day to day progress of class work, activities and home work. List of books can be circulated to parents with publishers and available stores.



Question Paper Generation & Online Exams

Question Banking, Question Paper Layouts for different assessments, etc. Exam wise different marks for questions. Question Paper Generation, Online Exams, Answer guide to ease the examination papervaluation.



Event Management

Planning events to be organized. Organized /failed events, Chief Guests, Programs in details, co-ordinators. Collection of Audios, Videos, snaps, scripts, etc. List of forthcoming events, inter-school events, etc. Participant wise performance, house wise performance

Benefits to Management

- Gets complete control over the over all activities and finances of the school including department wise income and expenditure details.
- Gets all the data in one place and helps in decision making.
- Can monitor the growth of the school both financially as well as in terms of academics
- Can access stock (inventory) details of the school including laboratories, libraries, furniture and fixtures and other articles.
- Can seamlessly communicate with all parents, students and staff of the institution
- Can obtain customized reports with statistics. Manageable reports let you get any information that you can imagine, out of the input data with a sky is the only limit.
- Easy access to view all the records at a go
- Minimization of redundant activities
- Instant view of MIS report on different parameters
- Provide single point of integration and control from Academics to Administrative
- Minimum risk of data loss due to multiple level automatic backup to multiple storage devices.

Benefits to Administrative Staff

- Can automate fee collection, accept payments online, generate quick reports
- Can administrate and generate payroll accounting & attendance details.
- Can contact students, parents or other staff members effortlessly and effectively
- Can keep their working environment transparent and performance visible to everyone
- Can initiate timely correspondence to other departments
- Can handle day to day activities like substitution in a click of a button thus saving a great deal of time and with no complaints of partiality.

Benefit to Parents

- Can be with their ward's growth and activities from wherever they are
- Get easy access about the performance, attendance and fee due of their ward
- Can easily communicate with teachers, principle and administrative staff
- Can access results, health records, other assessments of their wards for various examinations

Benefits to Teaching Staff

- Eases handling of student records in terms of student's attendance in class, examination and test activities, etc.
- Facilitates easy handling to class schedules, time table and question paper making or lesson planning
- Get online access to the system from home or office.
- Can contact students and parents effortlessly and effectively
- Easy access to vital information at one click
- Can craft lessons as per schools requirements
- Can generate student reports or self assessment just a click away

Benefits to students

- Easy access to online information like school calendar, homework announcement, etc.
- Can submit applications access lesson plans, homework, tests and projects online.
- Can track attendance, fees dues, notices, events, schedules, etc.

ScholarSYS has extremely rich features like advanced search capabilities, customizable entry screens, easy-to-use reporting wizards, a customizable menu and seamless integration with MS office. It is also integrated with SMS, Mobile Apps and almost all the third party technologies and devices. Even the most change-resistant users will find that ScholarSYS saves them time and effort at every step of operation because of many advanced tools and 'Never Before User Controls'. Customizable menu for each user and user group help administrator to control the security measures effortlessly. It is also equipped with tools that can communicate with portals like, ESIC, Provident Fund, etc. ECR submission, Challan Generation, Approval, UAN upload, etc can be done within ScholarSYS.

Southern Technology Corporation (STC) has its own style for a well executed implementation by providing enough people, processes and tools. Our time-tested development and implementation process, together with proper training and other tools, help to get your system and users up and running in record time.

STC is professionally managed and steered by versatile & diligent young entrepreneurs who have been active in the IT Industry for about two decades. We have proved our expertise in the field of database applications, ERP & e-Commerce.

We are totally into providing all kind of solutions to our esteemed clients. Ready to take on unique business challenges, we deliver quality results, within budget and scheduled time.

Our STRENGTH is our Happy Clients, who have been availing our products and services and encouraging and promoting us in the industry.

We understand that your data is the most valuable asset for your business. That need to be secured within your campus, so that any failure in your internet connection or wan connectivity will not affect your routine activities. It can be effectively backed up to other devices and at any point of time you can check the status of backed up data. Authorized personnel can move the backup to safer locations.

ScholarSYS permits users to import and export data from/to many supported databases and spread sheets. Also permits the eligible users to update the data in tabular format for easy, bulky and faster updation.

ScholarSYS also has the features to fully customize all the printable formats such as receipts, vouchers, TCs, mark sheets, progress reports, etc. Logos, photographs, barcodes or watermarks also can be placed. Users can fax or publish the same just by a click. for e.g. if you are generating the progress report for some classes or for some students, the report re-director will allow you to choose to fax, publish to internet, email, etc. on a click the progress report will be send to respective faxno/email id of each student/parent.

Manageable Reports is a unique feature of ScholarSYS which permits users (with privilege) to filter, calculate, sort, group, hide, unhide, font, color, search, reposition, export, etc. SMS and barcode printing is also part of manageable reports, which help users to send personalized SMS to parents, students, employees or any other groups. If the school wanted to invite a quotation for building a new block, they can request all the parents with occupation civil engineer to send their quotations in a minutes time.



Flexibility, Freedom and Friendliness of .Net



Security, Speed and Strength of SQL



Excellence, Experience and Expertise of STC

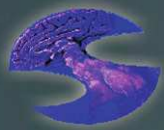
ScholarSYS is integrated with Popular accounting and inventory software 

Existing Tally users can continue using it and get their data from 'ScholarSYS' imported into Tally. This method can be adapted either for a parallel tracking or to cut down the software cost.

ScholarSYS is ready to be used on LAN, WAN or WEB

Software Projects Rescue and Migration

Statistics shows that due to many reasons, up to 40% of software development projects fail or exceed either their budget, or deadline, or both. If the flow of your present software development project does not satisfy you, and if it cannot be finished within the agreed budget or with sufficient quality, we offer our project rescue services. STC has profound experience in migrating data from almost all the known database systems and rescuing lot many projects.



Get the best out of IT

Southern Technology Corporation

Ground Floor, STC House, 11, Ambedkar Nagar, H.I.G. Main Road,

Indore, Madhya Pradesh, INDIA

Telephone :(Indore)+91-7314078662, (Delhi) +91-1203842552, (Bangalore) +91-8033013092

Mobile : +91-9893298952, Email : info@stc.ind.in

** All logos and trademarks used are properties of their respective owners

